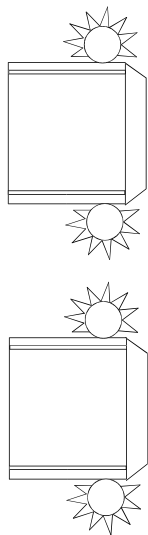
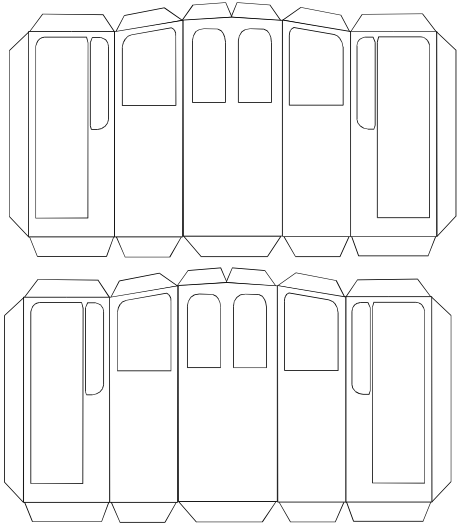
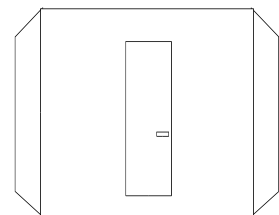
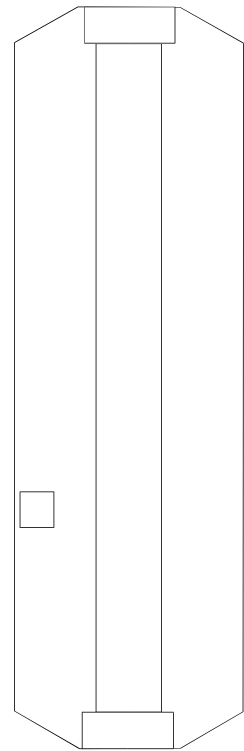
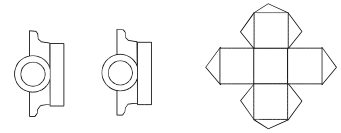
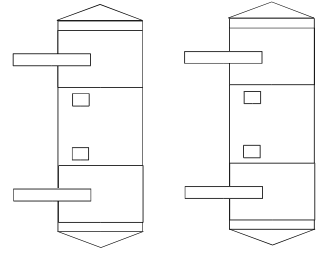
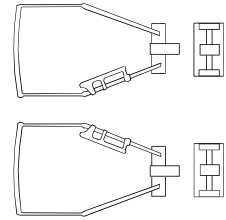
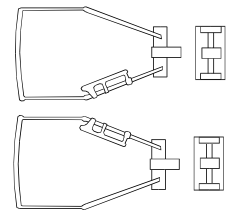
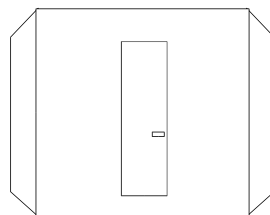
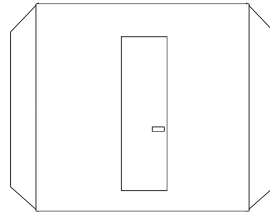
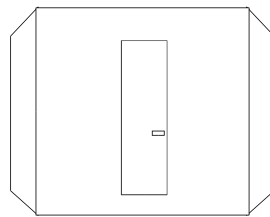
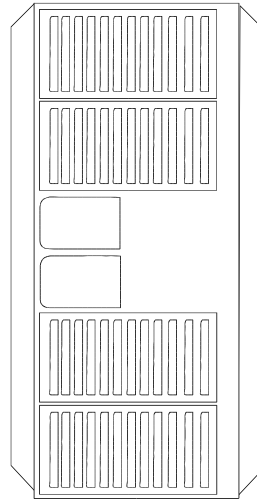
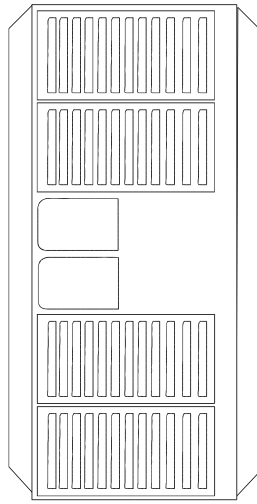
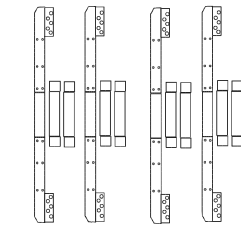
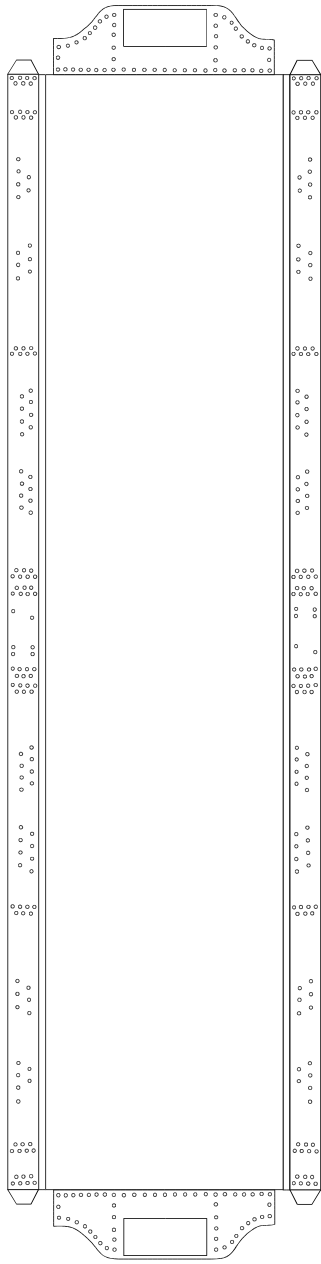
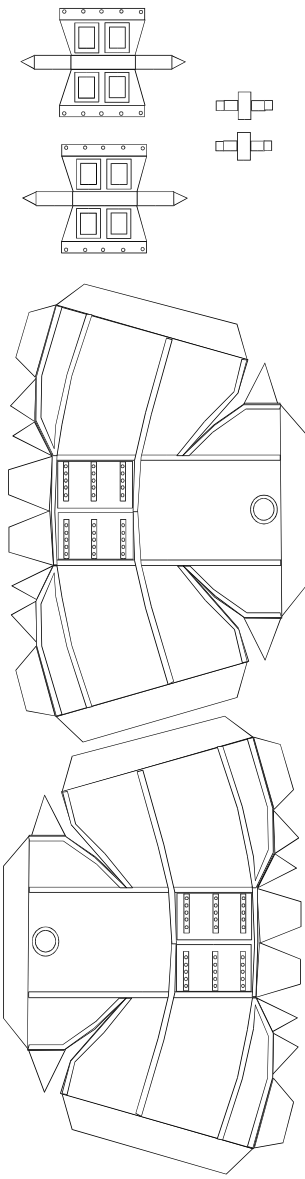
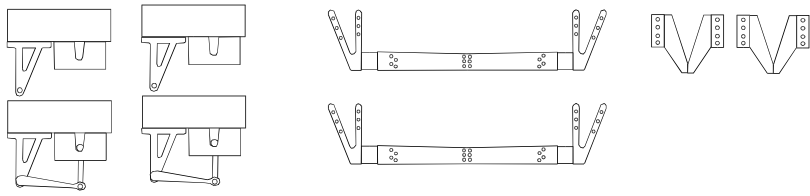


Centenaire de l'électrification
du train de la Mure
10 août 1903
Prototype E1 «Le Drac»

Gilles PELLETIER 2003

H0m 1,2cm





Centenaire de l'électrification
du train de la Mure
10 août 1903
Prototype E1 «Le Drac »

Gilles PELLETIER 2003

H0m | 1,2cm

